



2805 & 2809 George
Washington Memorial Highway
Yorktown, Virginia

Mac Houtz
Lynn Blackwell
Drucker & Falk, LLC
11824 Fishing Point Drive
Newport News, Va.23606
757.873.1401
mhoutz@druckerandfalk.com
lblackwell@druckerandfalk.com

DRUCKER & FALK
REAL ESTATE

Property Overview

Description:

Corner development parcel in sought-after Route 17 location. By-right zoning for retail, office and automotive. Completed plans in hand for 4,030 SF building.

Location:

Two blocks north of the Route 17/Victory Boulevard interchange.

Corner of Route 17 & Rich Road, the site is 2 blocks north of the Yorktown Wal-Mart.

Size:

2 parcels totaling .56 acres

Zoned:

GB

Frontage:

150 feet on Route 17

Price:

\$240,000.00

For more Information please contact:

Mac Houtz

Lynn Blackwell

Drucker & Falk, LLC

11824 Fishing Point Drive, Newport News, Va.23606

757.873.1401

mhoutz@druckerandfalk.com

lblackwell@druckerandfalk.com

This information was obtained from sources deemed to be reliable but is not warranted. This offer subject to errors and omissions or withdrawal without notice. Unless disclosed otherwise, Drucker & Falk, LLC is the listing broker and represents the seller/landlord.

Property Overview

Demographics:

2015 Demographics	1 mile	3 miles	5 miles
Population	6,975	57,279	161,125
Households	2,546	22,997	63,677
Avg Household Income	\$117,524	\$89,285	\$80,930

For more Information please contact:

Mac Houtz

Lynn Blackwell

Drucker & Falk, LLC

11824 Fishing Point Drive, Newport News, Va.23606

757.873.1401

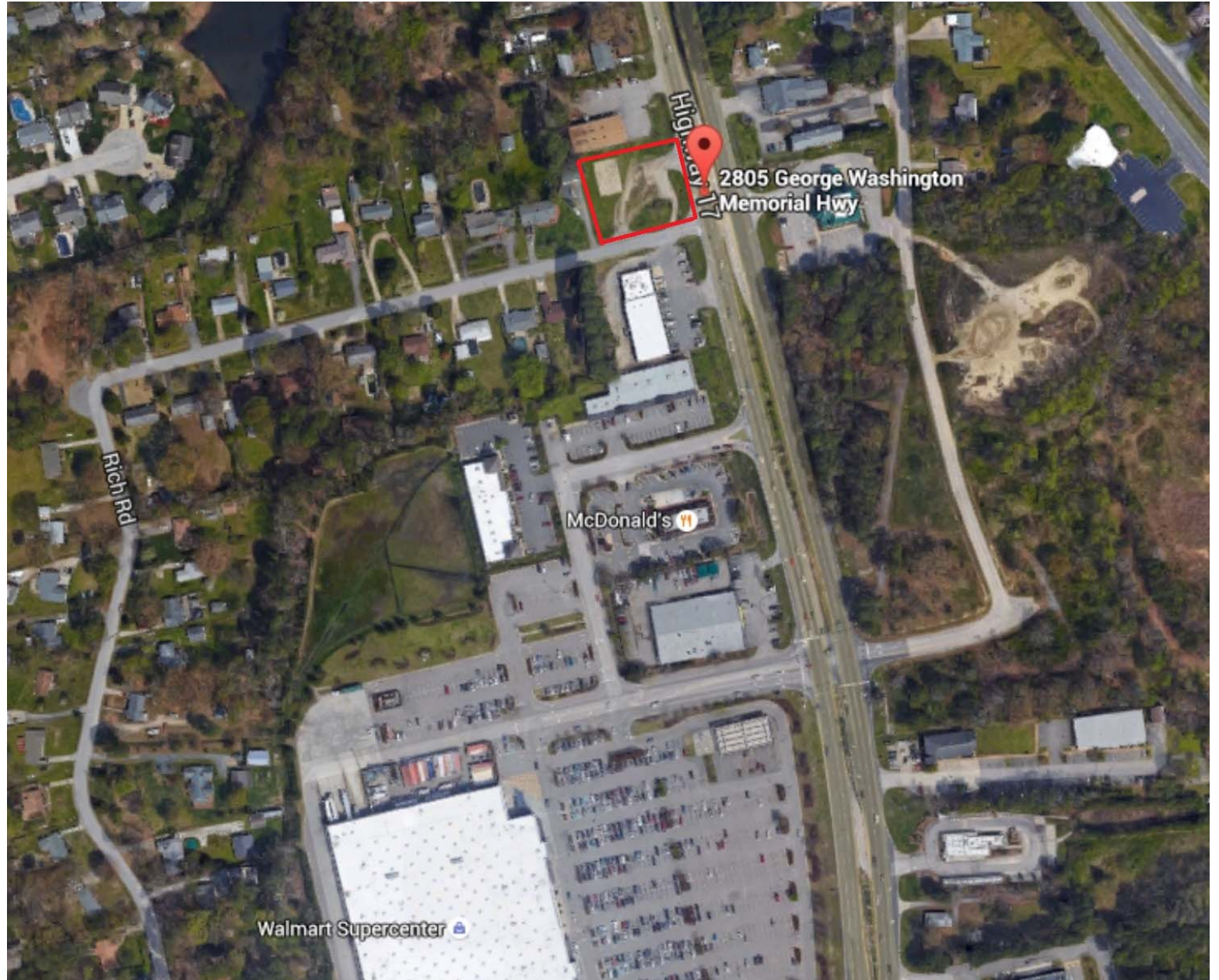
mhoutz@druckerandfalk.com

lblackwell@druckerandfalk.com

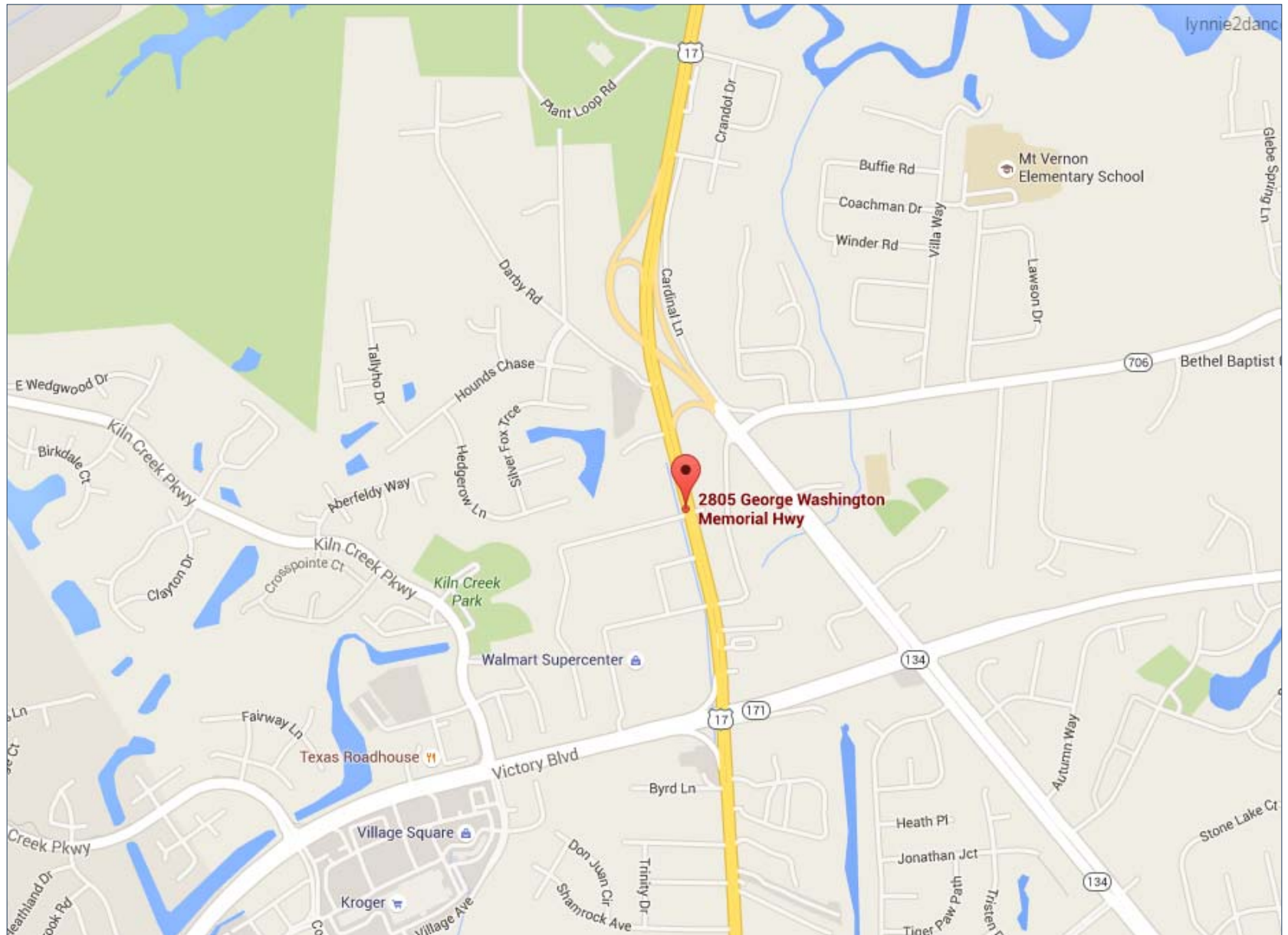
This information was obtained from sources deemed to be reliable but is not warranted. This offer subject to errors and omissions or withdrawal without notice. Unless disclosed otherwise, Drucker & Falk, LLC is the listing broker and represents the seller/landlord.



Aerial



Map



Map

